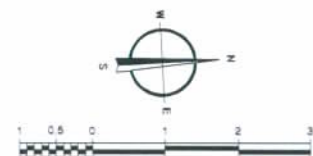
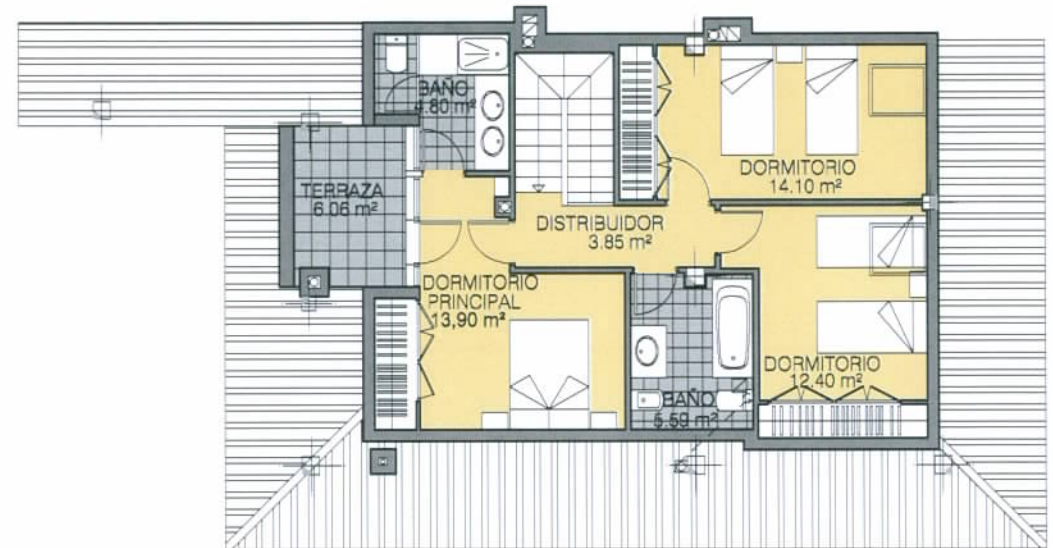
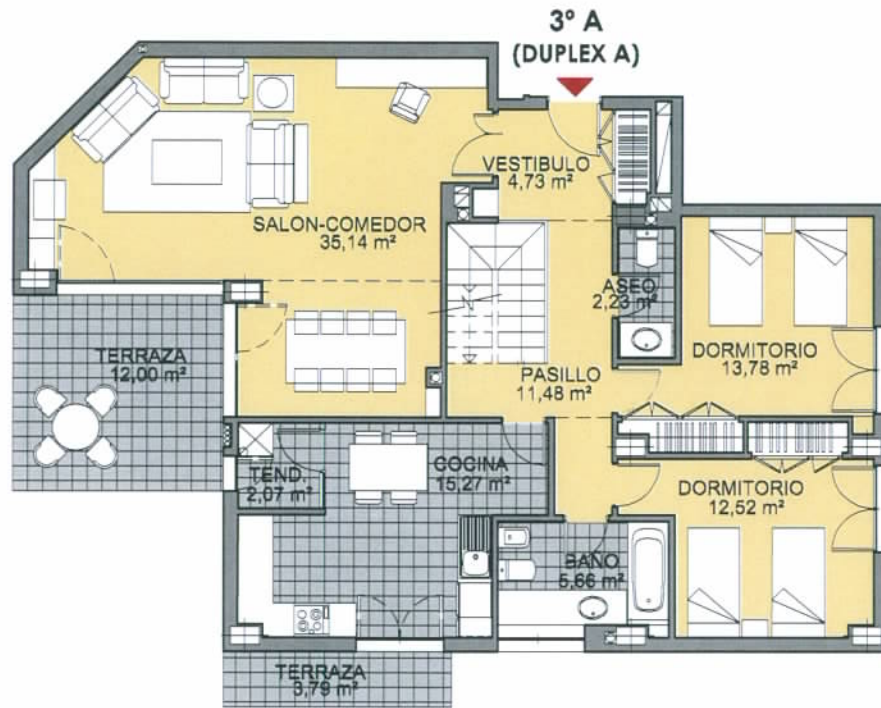
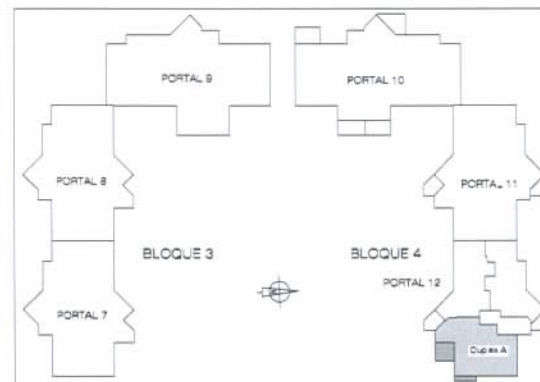


# PINAR DEL MAYORAZGO

BOADILLA DEL MONTE. (MADRID)  
 INMOGESTIÓN ÁTICO MAYORAZGO, S.L.



PLANO INFORMATIVO NO CONTRACTUAL



## MODELO 6

BLOQUE 4: PORTAL 12  
 Vivienda 3° A (DUPLEX A). 5 Dormitorios

Superficie Útil:	179,37 m <sup>2</sup>
Vivienda	157,52 m <sup>2</sup>
Terrazas	21,85 m <sup>2</sup>

Superficie Construida:	234,04 m <sup>2</sup>
Vivienda	212,19 m <sup>2</sup>
Terrazas	21,85 m <sup>2</sup>